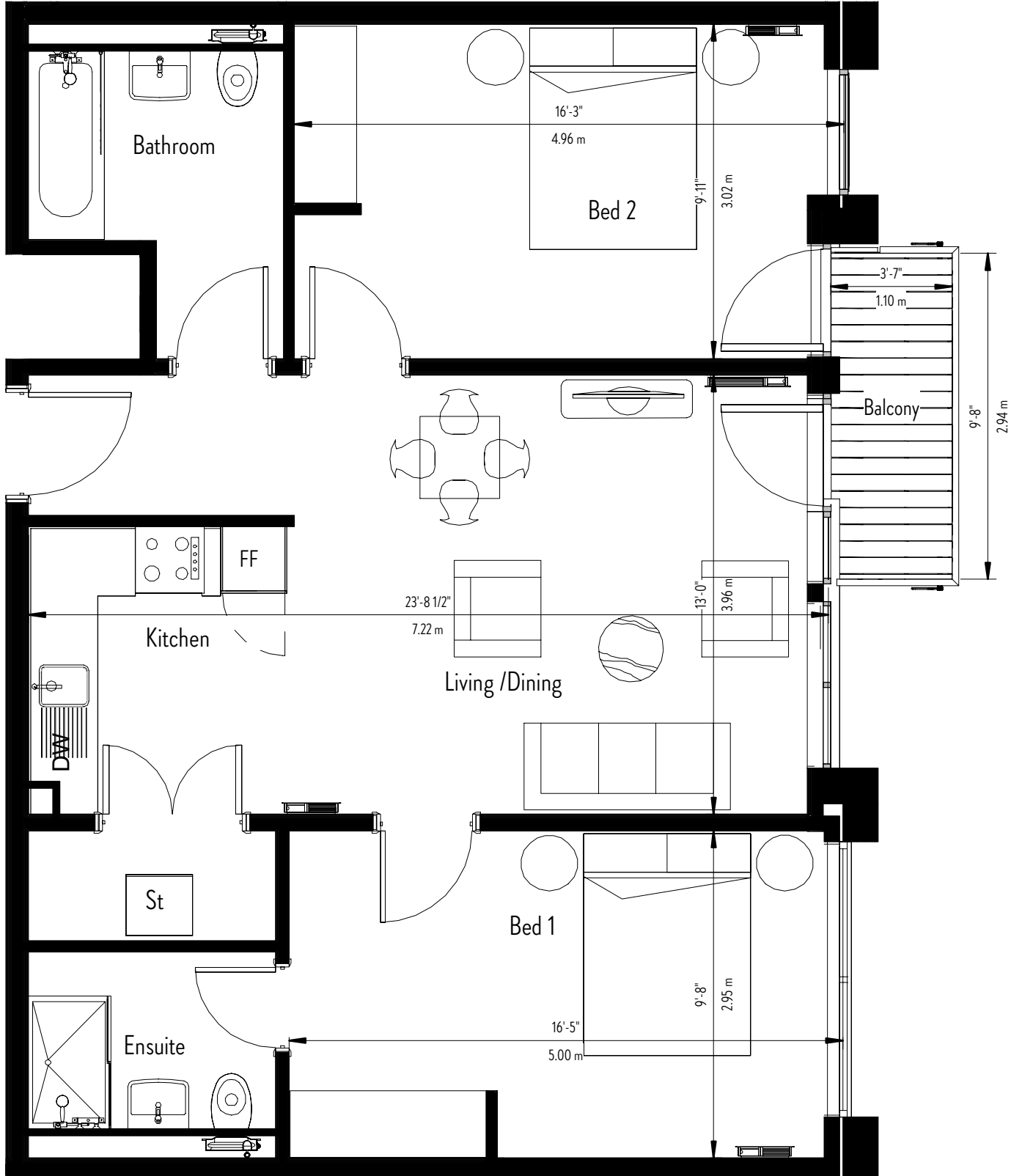


Key		
St	Store/Utility	
FF	Fridge Freezer	
DW	Dishwasher	
Living Dining	23'-8 1/2" x 13'-0"	7.22m x 3.96m
Bed 1	16'-5" x 9'-8"	5.00m x 2.95m
Bed 2	16'-3" x 9'-11"	4.96m x 3.02m
Bathroom	7'-6 1/2" x 9'-11 1/2"	2.30m x 2.78m
Ensuite	7'-4" x 5'-3"	2.23m x 1.60m



* N.B. Furniture in layout not included as part of marketing price.
Floorplans are not drawn to scale. Dimensions are given as a guide only and should not be used as a basis for purchasing flooring or furniture. Click Herschel Ltd reserve the right to alter plans, specifications, position of doors and windows and change tenure subject to demand without prior notice. Please ask your Sales Consultant for current information when reserving your new home. Information correct at time of going to print.