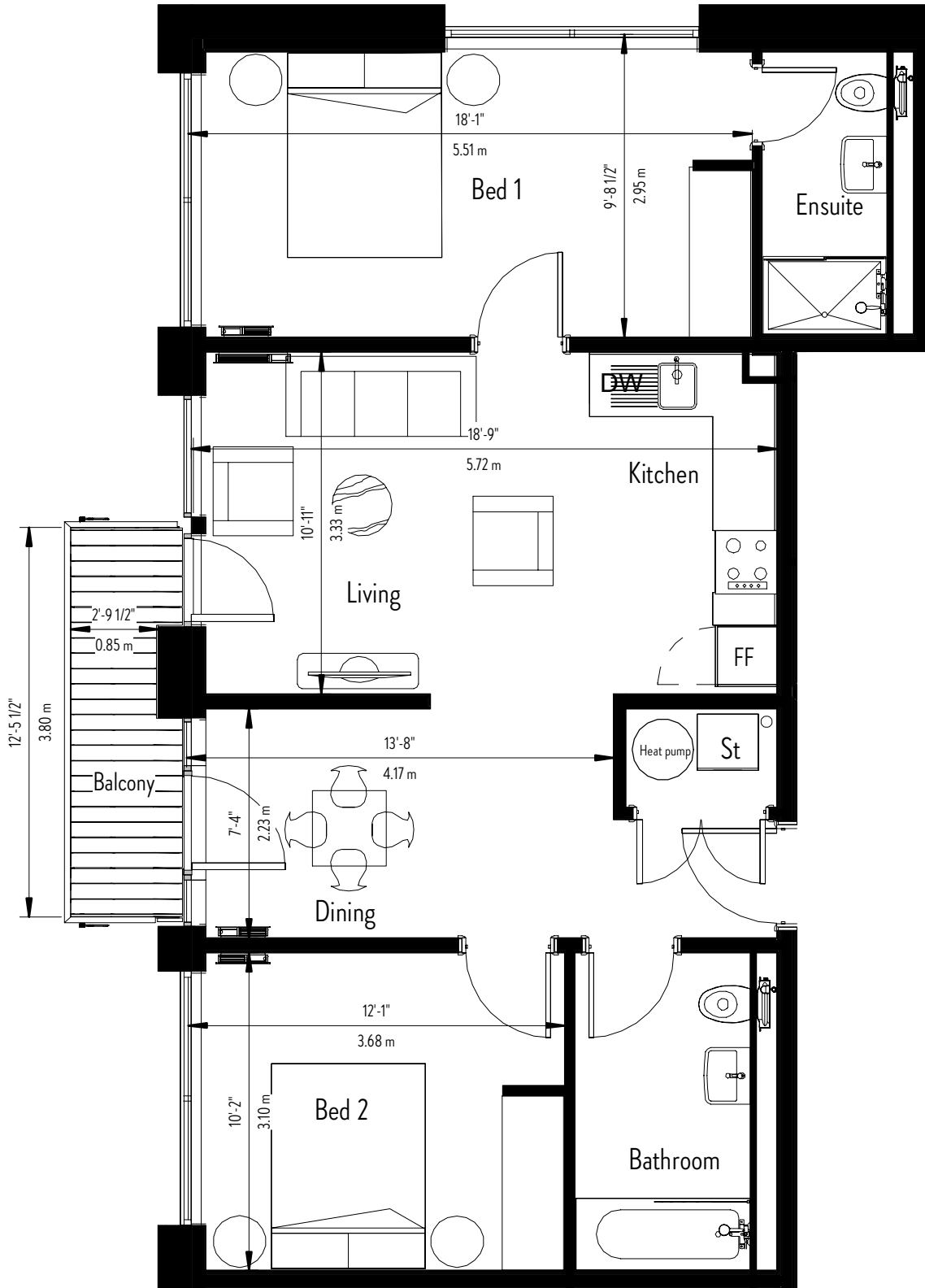




Plot No. 214,223,232

Living	18'-9" x 10'-11"	5.72m x 3.33m
Dining	13'-8" x 7'-4"	4.17m x 2.23m
Bed 1	18'-1" x 9'-8 1/2"	5.51m x 2.95m
Bed 2	12'-1" x 10'-2"	3.68m x 3.10m
Bathroom	5'-7 1/2" x 10'-2"	1.71m x 3.10m
Ensuite	4'-0 1/2" x 9'-0 1/2"	1.23m x 2.76m

Key	
St	Store/Utility
FF	Fridge Freezer
DW	Dishwasher



* N.B. Furniture in layout not included as part of marketing price.

Floorplans are not drawn to scale. Dimensions are given as a guide only and should not be used as a basis for purchasing flooring or furniture. Click Herschel Ltd reserve the right to alter plans, specifications, position of doors and windows and change tenure subject to demand without prior notice. Please ask your Sales Consultant for current information when reserving your new home. Information correct at time of going to print.